

Produce Traceability Initiative

Application Development & Support

PROJECT SPECS

PROJECT TYPE: Custom Software Dev

TECHNOLOGIES: WPF, C3, .Net framework, Web services (SOAP), Zebra programming, Ruby, Rails framework, PostgreSQL, SQL Server, Webrick

SERVICES PROVIDED: : Business Analysis, Project Management, Software Development, Application Design, Quality Assurance

TEAM:

Backend Developers,
Frontend Developer,
Designer,
QA Engineers,
Project Manager/ Business Analyst

Duration: 10+ year

TESTIMONIAL

"Riverstone is a professional business partner of exceptional quality. They provided several talents over the course of a few years and each one of them were a great fit for our needs. I would look to Riverstone to raise the bar in any QA organization, no matter how big or small."

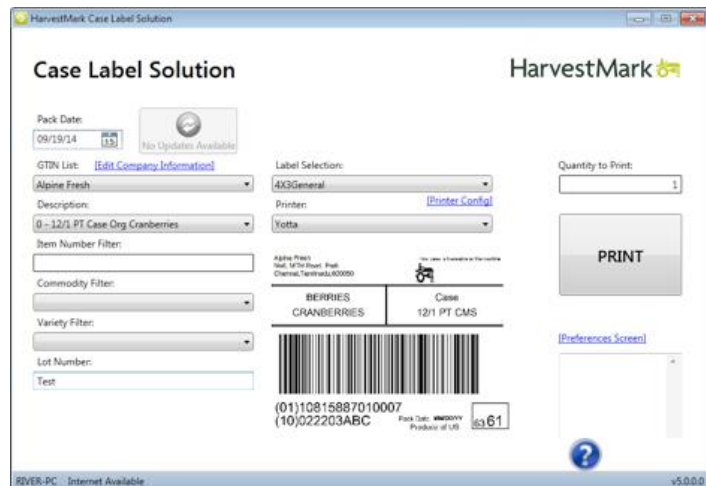


Muthu Arumugam,
VP of Engineering
Cambridge Blockchain

Client: HarvestMark, a Division of Trimble

Industry: Food Processing

Website: <https://www.harvestmark.com/>



HarvestMark provides a platform that delivers effective product authentication and unit-level traceability to help brand owners increase consumer trust, build new levels of channel intelligence, drive sales and traceability of produce from the farm to the dinner table.

BUSINESS CHALLENGE

- HarvestMark wanted to improve information flow in their supply chain, particularly to integrate all operational processes for efficient business operations
- GTIN (Global Trade Item Number) records were maintained manually
- PTI (Produce Traceability Initiative) label formats required user customization
- HarvestMark needed a professional technical support team to support both hardware and software at printing stations at customer locations

OBJECTIVE

- To implement web-based GTIN management module to support GTIN management and code generation to support PTI label printing

KEY ACHIEVEMENTS

- Manage application setup & configuration for 450 customers
- 400 Support tickets per month- 98% resolution within SLA
- Supported major customers like Driscoll's & Sun Pacific
- 24/7 Remote Support via Salesforce, LogMeIn & TeamViewer
- Average turnaround time reduced from 90 to 15 mins

- To integrate operational processes into an end-to-end PTI software solution
- To support content management for PTI response pages for GTIN lookup (Trace Page Management)
- To automate shipment label formatting, creation & printing process

SOLUTION

- Implemented new identification & traceability system based on GS1 standards
- Enabled users to perform PTI and GTIN lookup from mobile application and web page
- Robust security framework within the system allows users to only access authorized sections
- Built **design module** to design labels based on corresponding label types e.g., 4x3, 4x2 RPC
- Built **print label module** to add multiple numbers of network printers & Local printer and print the different types of labels based on the types of template design
- **Batch trigger printing** module to print the labels in volume using input Trigger device
- Integrated EDI 856 for Advance Shipment Notification(**ASN**)
- Developed Mobile Optimized Response Page (**MORP**)

DISTINCTIVE FEATURES

- GTIN Manager solution
- Hybrid pallet tag
- QR/PTI Code request
- Label Modification
- GTIN updates
- Trace page management
- Case labelling
- GTIN co-packer
- Subscription module for PTI users
- Automated Product Discrepancy Notice (PDN)