



MANUFACTURING

Riverstone provides Manufacturing IT solutions to streamline your supply chain process, simplify global operations, manage quality processes and rapidly evolve to meet market changes.



Asset Management & Optimization

- Manage critical assets
- Reduced costs
- Utilization plan
- Efficiency & optimization



Enterprise & Supply Chain

- Enterprise resource planning system
- Integrate your supply chain
- Financial accounting



Manufacturing Solutions

- Manufacturing process
- Automate operations
- Advanced analytics



Inventory Management

- Technology driven
- Realtime data
- Multiple warehouses



Order Management

- Order tracking
- Better customer experience
- Realtime tracking



Field Management

- Resource management
- Scheduling & dispatching
- Mobile Access



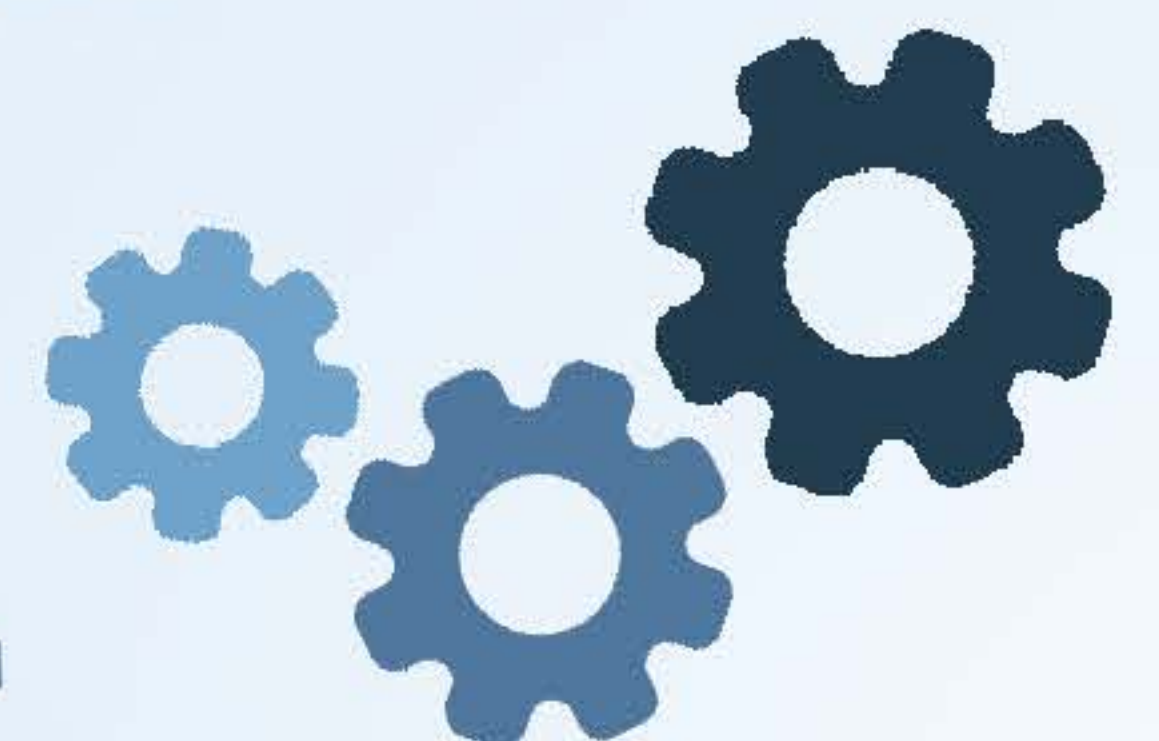
Cloud & Mobile Management

- Configure user experience
- Analytics & reports
- Secured & easy-to-use technology



Sustainability Management

- Realtime consumption tracker
- Complex realtime data analysis
- Higher asset utilization



"Riverstone is a professional business partner of exceptional quality. They provided several talents over the course of few years and each one of them were a great fit for our needs."

"I would look to Riverstone to raise the bar in any QA organization, no matter how big or small."

SUCCESS STORIES



MUTHU ARUMUGAM

VP of Engineering,
Cambridge Blockchain

Where We Can Help

- Optimized supply chain plan
- Sourcing & procurment
- Supply chain integration
- Analytics & reports
- Inventory & warehouse management
- Realtime track of consumption
- Cost reduction
- Faster time-to-market



How We Can Help

- Improved site experience
- API integration
- Automated email notifications for errors
- Multi-lingual support
- Modern & freely flowing UI
- Immediate action to mitigate risks
- Multiple view options
- Web data logger

OTHER INDUSTRIES WE SERVE



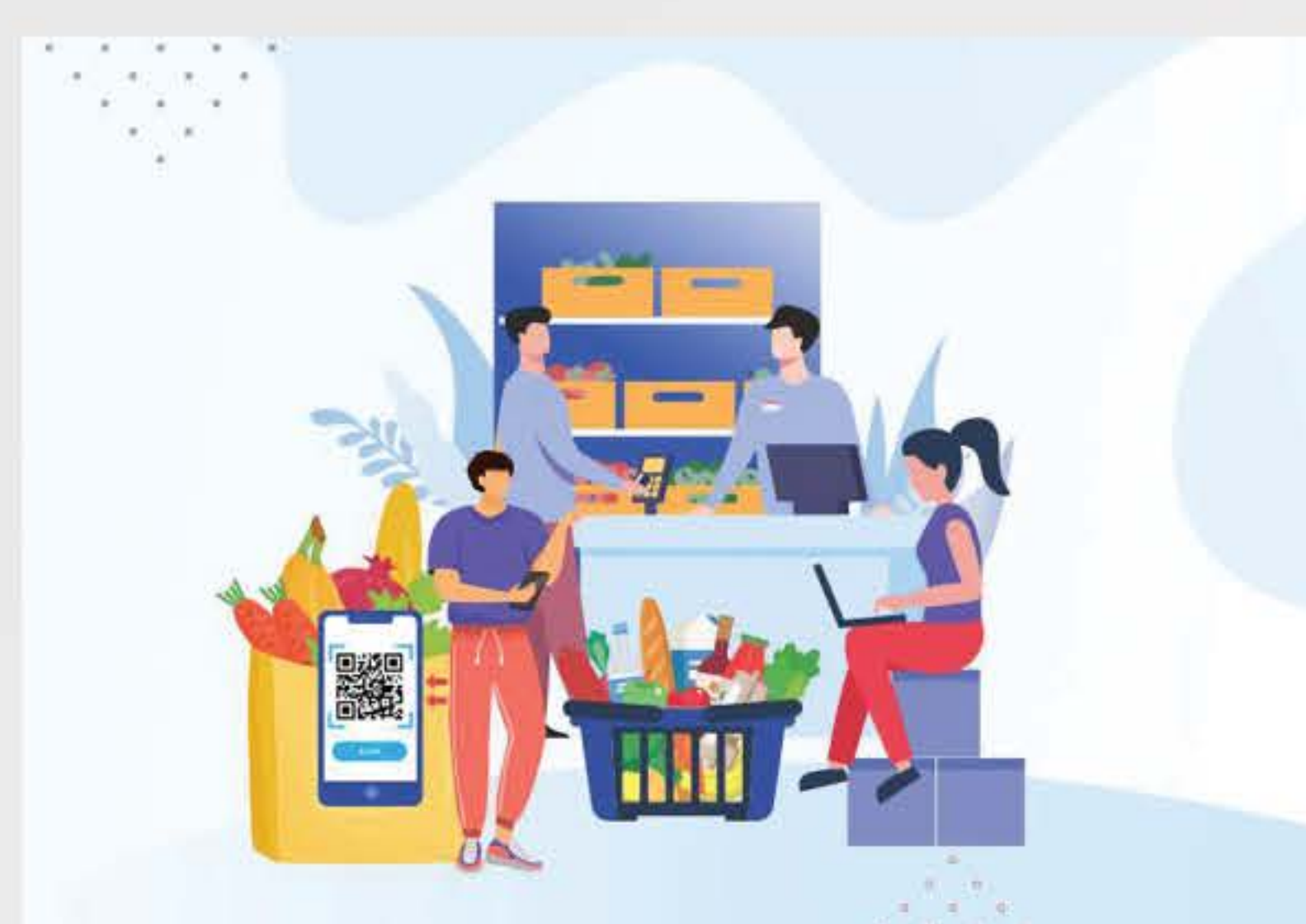
E-Commerce & Retail



Commercial Furniture



Education



Food & Produce



Financial Services



www.riverstonetech.com



software@riverstonetech.com



1 - 925 - 218 - 0669
91 - 44 - 42039192 / 93